

## AdvancedHMI

*A different approach to HMI development*



## Quick Start Guide

# AdvancedHMI

---

## Quick Start

- 1) Visual Studio Community Edition (or higher) will need to be installed on the development PC. If you do not already have one installed, you can get Visual Basic Express from Microsoft at the following link:

<http://www.visualstudio.com/en-us/products/visual-studio-community-vs>

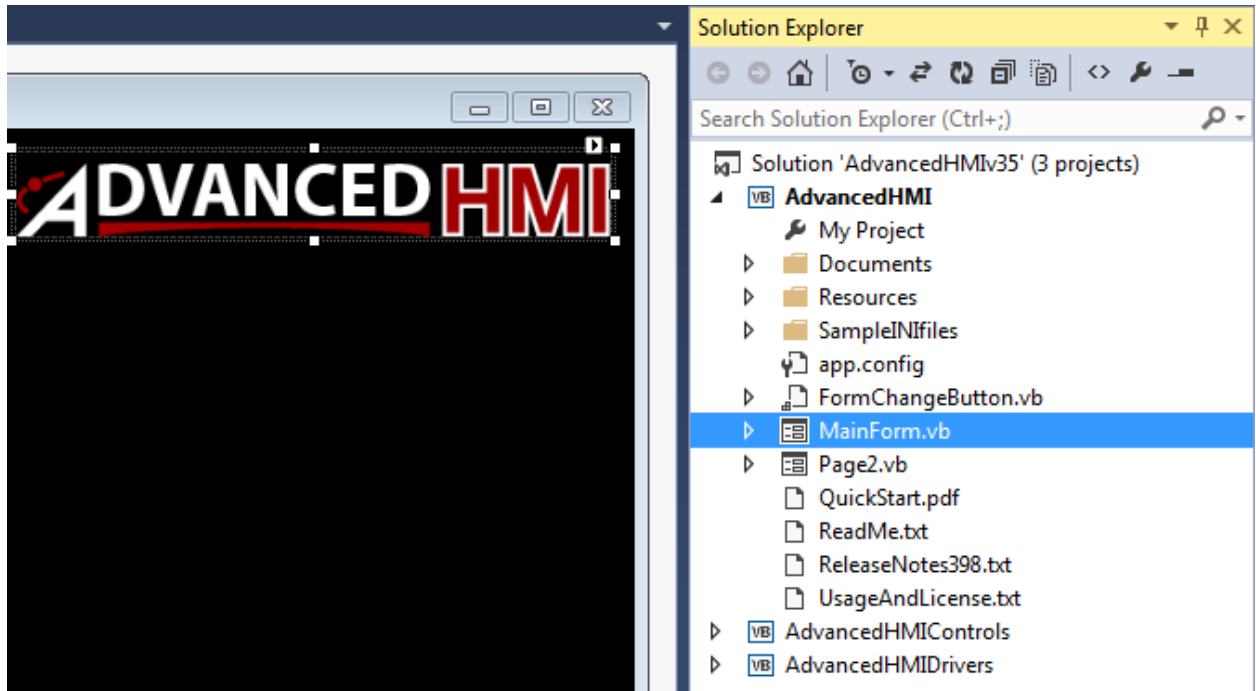
- 2) You will now need the AdvancedHMI project, this can be downloaded from:

<http://sourceforge.net/projects/advancedhmi/>

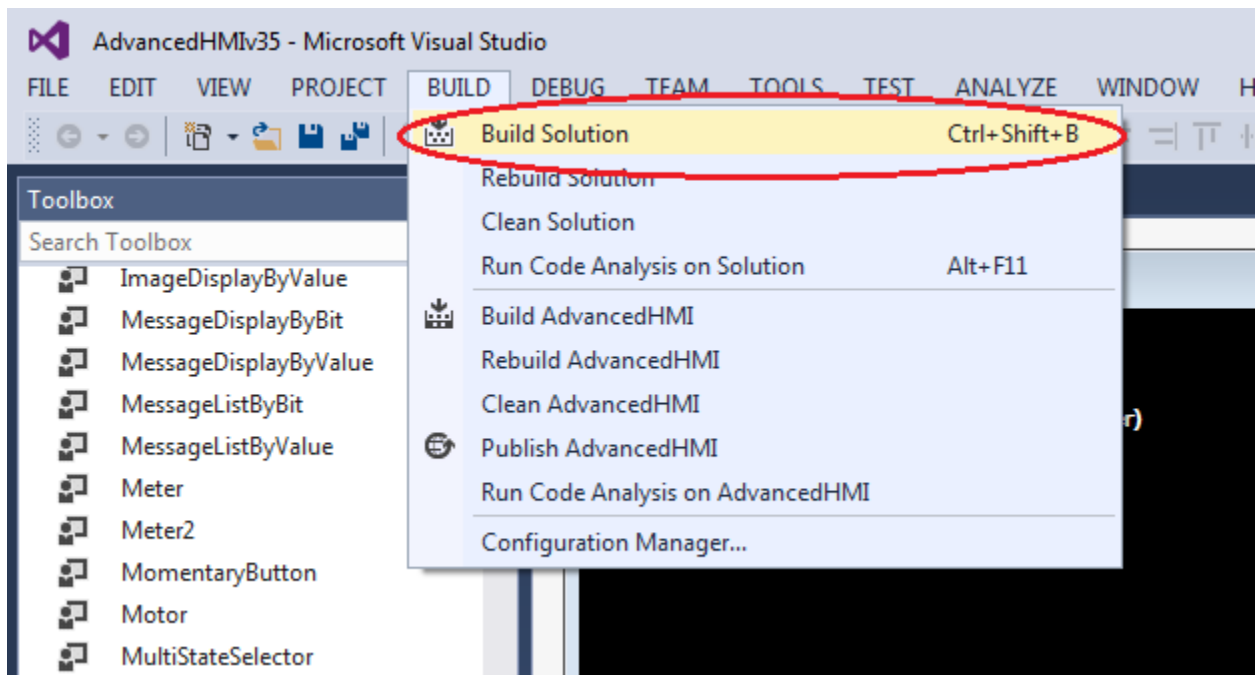
- 3) After downloading AdvancedHMI, extract the files from the zip file
- 4) Open the solution file (AdvancedHMI.sln) by either double-clicking or starting Visual Basic and going to File->Open Project and browsing to the AdvancedHMI.sln file  
Note : If you are using Visual Basic 2012 or higher, you will see an upgrade wizard. Just click the Finish button to proceed

# AdvancedHMI

- 5) Open the MainForm by double-clicking the name in the Solution Explorer



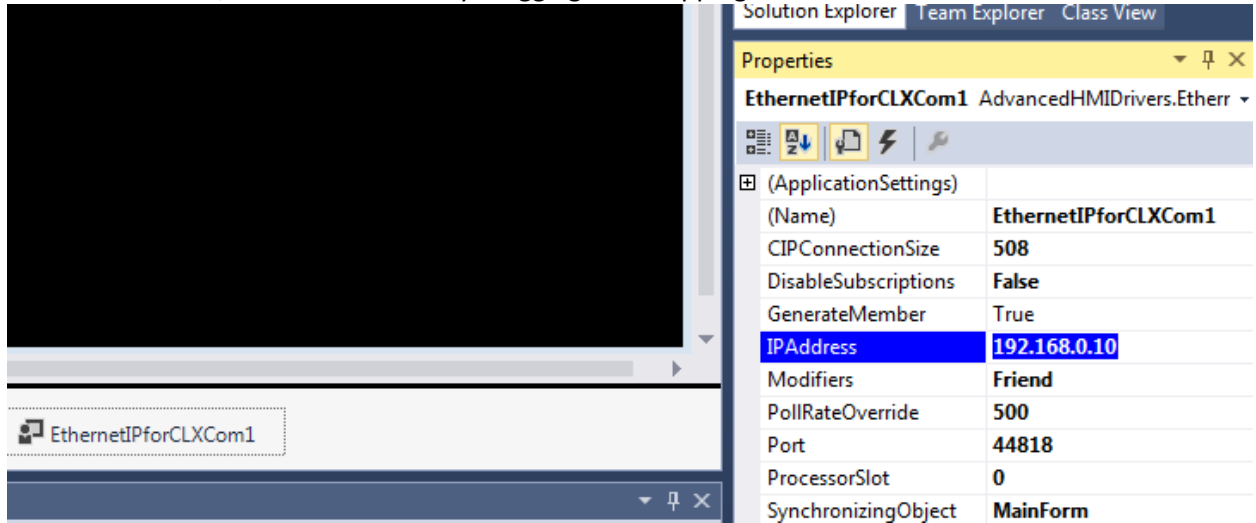
- 6) The project will now need to be compiled in order to add the components to the Toolbox



# AdvancedHMI

---

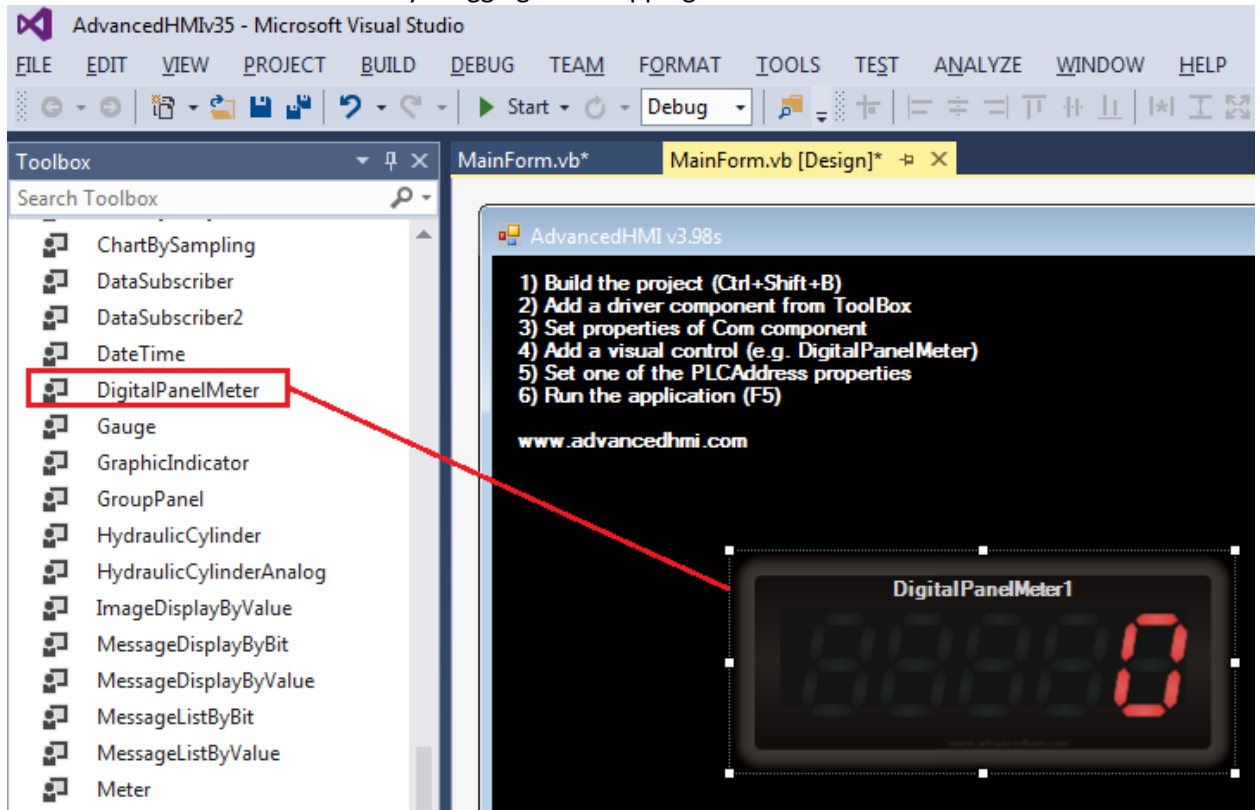
- 7) From the ToolBox, add a Com driver by dragging and dropping to the form.



- 8) Set the appropriate properties for the com driver you selected, e.g. IPAddress. See figure above.

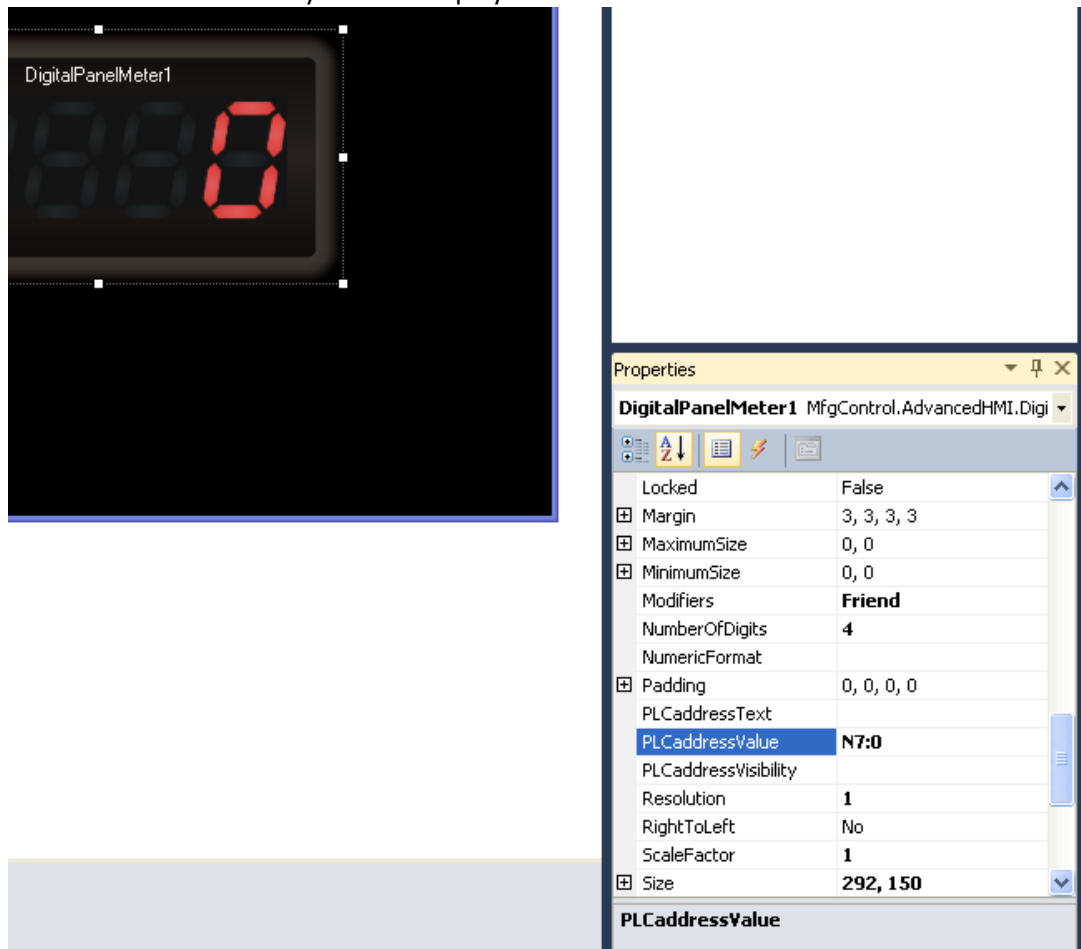
# AdvancedHMI

- 9) Add a visual control to the form by dragging and dropping from the Toolbox.



# AdvancedHMI

10) Set the PLC address that you want displayed on the selected control.



11) Be sure the PLC is connected and ready, then Run the application by clicking the VCR play button or pressing F5

